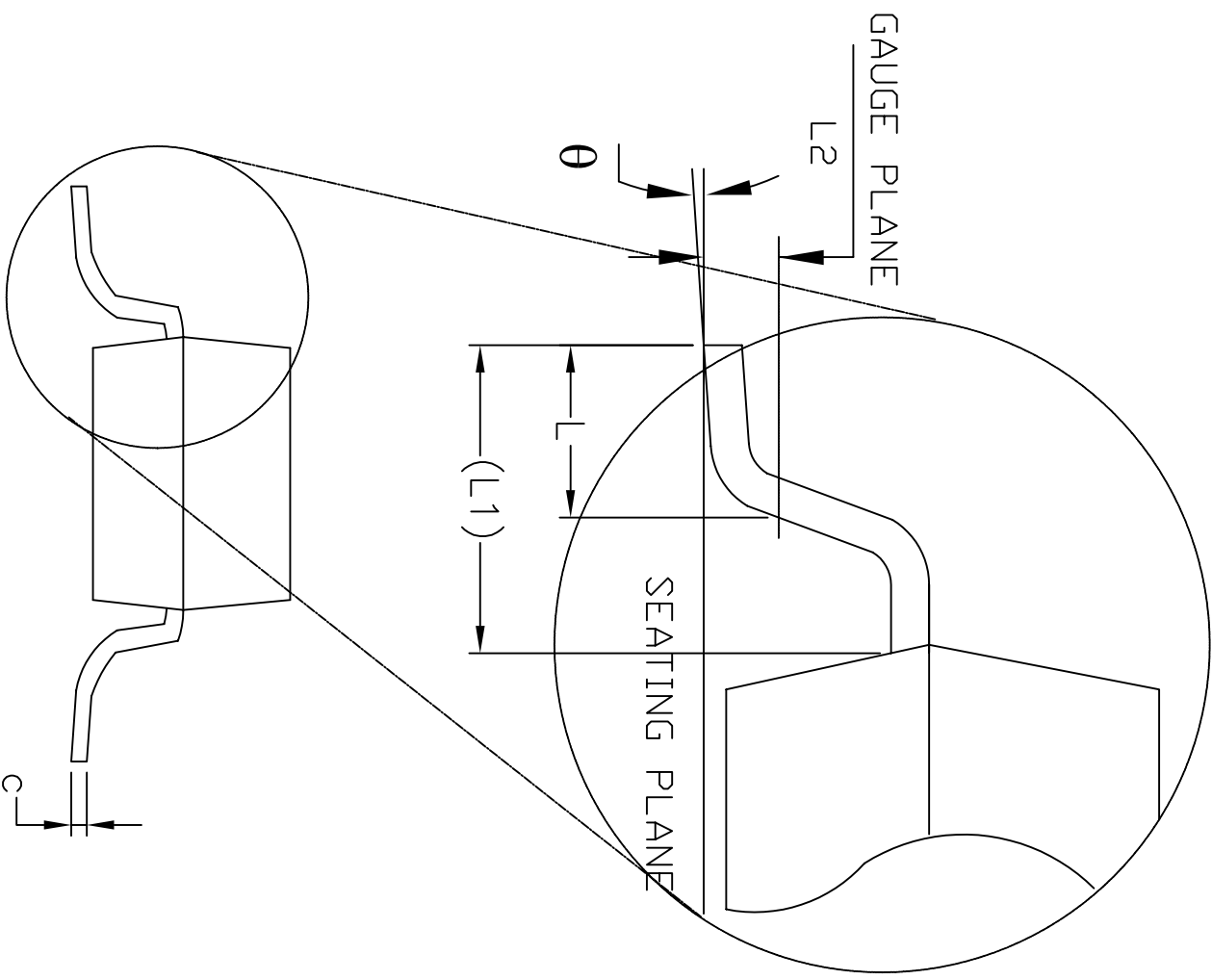
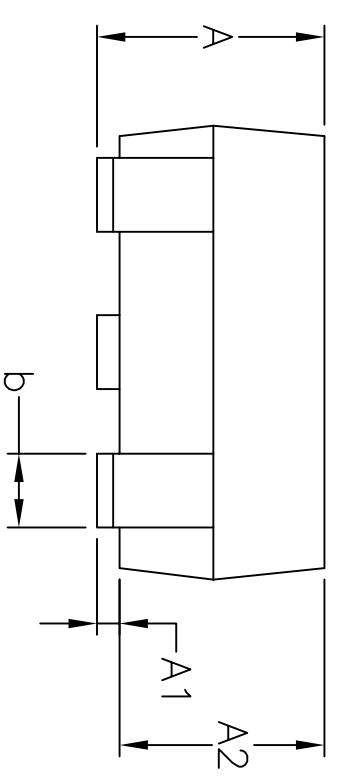
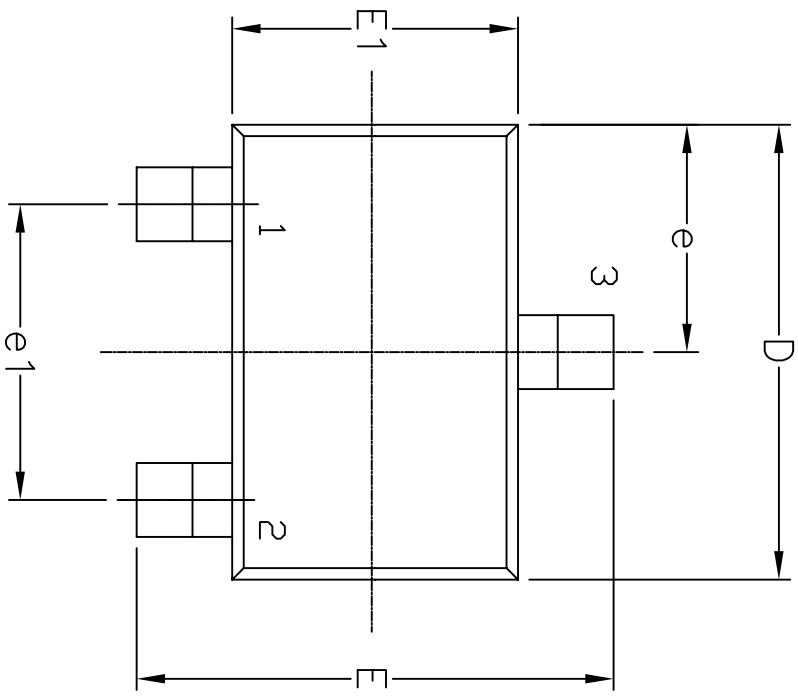


REVISION HISTORY				
REV.	DESCRIPTION	DATE	APP'D	
A	DRAWING ORIGINATION	10/25/05	JL	
B	DRAWING FORMAT MODIFICATION	07/25/06	JL	
C	REVISE SIDE VIEW AND FRONT VIEW	07/05/07	JL	
D	CHANGE DRAWING LOGO AND COMPANY NAME	11/28/07	JL	

Top View



Side View

Front View

3 Pin SOT-23 JEDEC TO-236 Variation AB									
SYMBOLS	DIMENSIONS IN MM (Control Unit)			DIMENSIONS IN INCH (Reference Unit)					
	MIN	NOM	MAX	MIN	NOM	MAX			
A	0.89	—	1.12	0.035	—	0.044			
A1	0.01	—	0.10	0.000	—	0.004			
A2	0.88	0.95	1.02	0.035	0.037	0.040			
b	0.30	—	0.50	0.012	—	0.020			
c	0.08	—	0.20	0.003	—	0.008			
D	2.80	2.90	3.04	0.110	0.114	0.120			
E	2.10	—	2.64	0.083	—	0.104			
E1	1.20	1.30	1.40	0.047	0.051	0.055			
e	0.95 BSC			0.038 BSC					
e1	1.90 BSC			0.075 BSC					
L	0.40	0.50	0.60	0.016	0.020	0.024			
L1	0.54 REF			0.021 REF					
L2	0.25 BSC			0.010 BSC					
$\theta$	0°	—	8°	0°	—	8°			
N	3			3					

		<b>EXAR CORPORATION</b>	
Packaging Approval:		Drawing No: 3-PIN SOT-23	
By: JL	Date: 11/28/07	Revision: D	Sheet: 1 OF 1