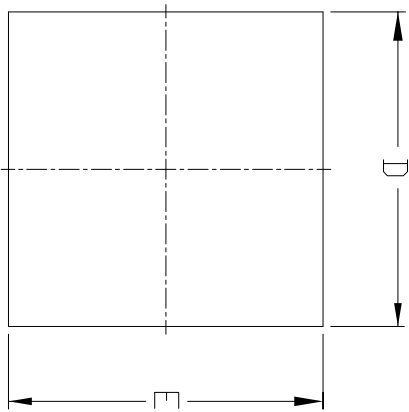
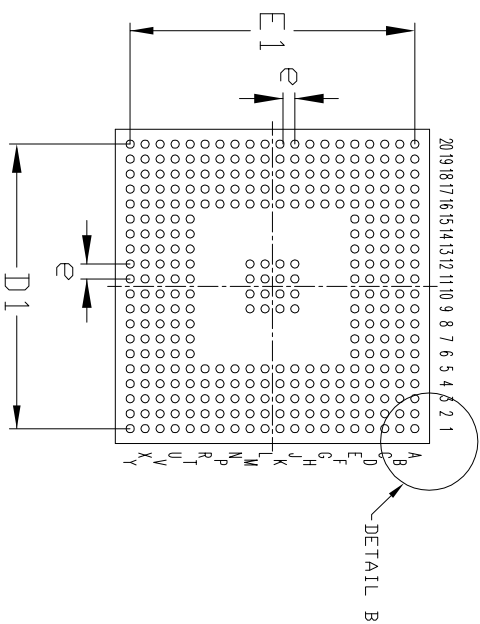


REVISION HISTORY

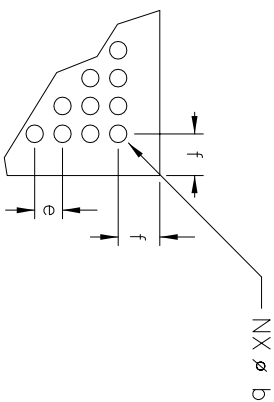
REV.	DISCRIPTION	DATE	APP'D
A	DRAWING ORIGINATION	08/17/09	PC



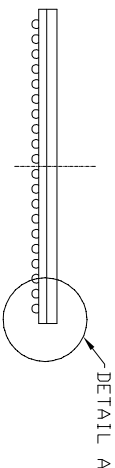
TOP VIEW



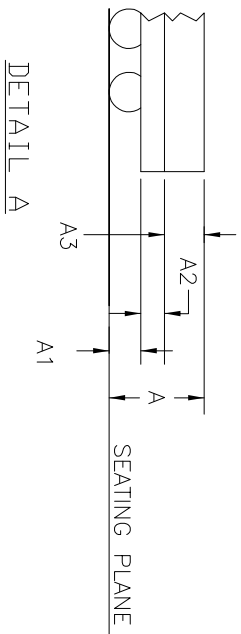
BOTTOM VIEW



DETAIL B



SIDE VIEW



DETAIL A

SYMBOLS	DIMENSIONS IN MM (Control Unit)			DIMENSIONS IN INCH (Reference Unit)		
	MIN	NOM	MAX	MIN	NOM	MAX
316-BALL 21X21mm L-fpBGA JEDEC MO-192 VARIATION DAH-1						
A	1.45	1.59	1.73	0.057	0.063	0.068
A1	0.28	0.33	0.38	0.011	0.013	0.015
A2	0.52	0.56	0.60	0.020	0.022	0.024
A3	0.65	0.70	0.75	0.026	0.028	0.030
D	20.80	21.00	21.20	0.819	0.827	0.835
D1		19.00	BSC		0.748	BSC
E	20.80	21.00	21.20	0.819	0.827	0.835
E1		19.00	BSC		0.748	BSC
b	0.45	0.50	0.55	0.018	0.020	0.022
e		1.00	BSC		0.039	BSC
f	0.90	1.00	1.10	0.035	0.039	0.043
M		20			20	
N		316			316	

NOTES: 'W' REPRESENTS THE BASIC BALL MATRIX SIZE.



EXAR CORPORATION

316-BALL 21X21mm L-fpBGA PACKAGE OUTLINE

Packaging Approval:

Drawing No: 316-BALL 21X21mm L-fpBGA

By: PC Date: 08/17/09 Revision: A Sheet: 1 OF 1