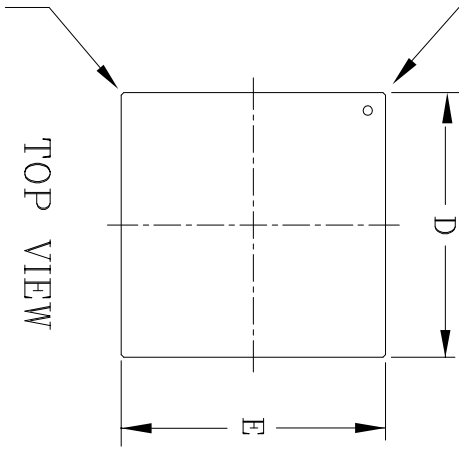
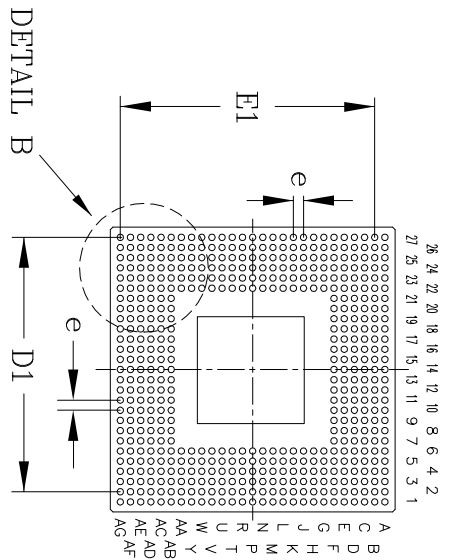


CORNER

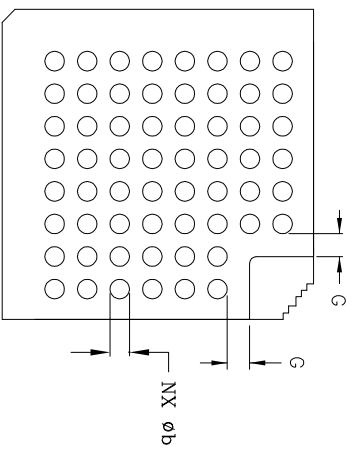


TOP VIEW

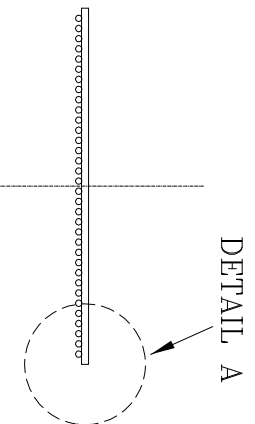


BOTTOM VIEW

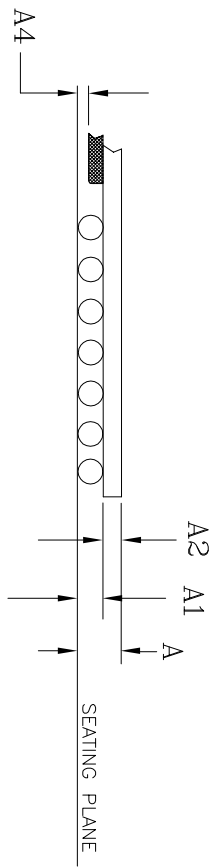
45 DEGREE 0.50MM CHAMFER
(4 PLCS)



DETAIL B



SIDE VIEW



DETAIL A

REVISION HISTORY		
REV.	DISCRIPTION	DATE
A	DRAWING ORIGINATION	05/24/10

504-BALL 35X35mm TBGA						
SYMBOLS	DIMENSIONS IN MM (Control Unit)			DIMENSIONS IN INCH (Reference Unit)		
	MIN	NOM	MAX	MIN	NOM	MAX
A	1.30	1.50	1.70	0.052	0.059	0.067
A1	0.50	0.60	0.70	0.020	0.024	0.028
A2	0.80	0.90	1.00	0.031	0.035	0.039
A4	0.15	—	0.006	—	—	—
D	34.80	35.00	35.20	1.370	1.378	1.386
D1	—	33.02 BSC	—	—	1.300 BSC	—
E	34.80	35.00	35.20	1.370	1.378	1.386
E1	—	33.02 BSC	—	—	1.300 BSC	—
b	0.60	0.75	0.90	0.024	0.030	0.035
e	—	1.27 BSC	—	—	0.050 BSC	—
G	0.35	—	0.014	—	—	—
M	—	27	—	—	27	—
N	—	504	—	—	504	—

NOTES: "M" REPRESENTS THE SOLDER BALL MATRIX SIZE.

		EXAR CORPORATION	
		504-BALL 35X35mm TBGA PACKAGE OUTLINE	
Packaging Approval:		Drawing No: 504-BALL 35X35mm TBGA	
By: PC	Date: 05/24/10	Revision: A	Sheet: 1 OF 1