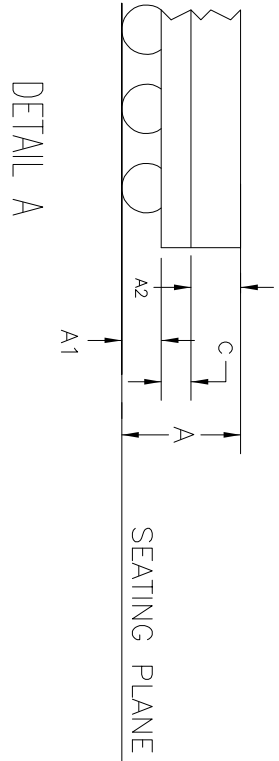
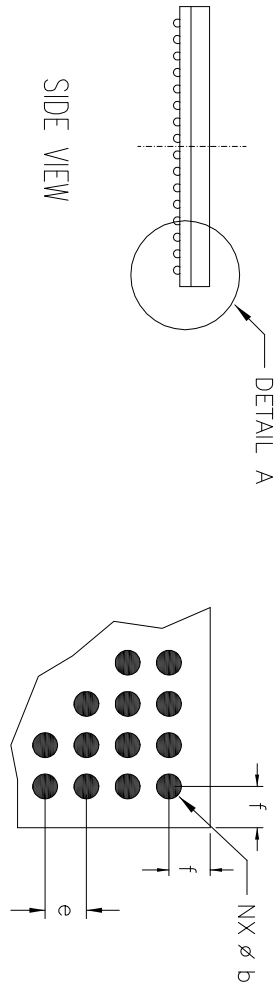
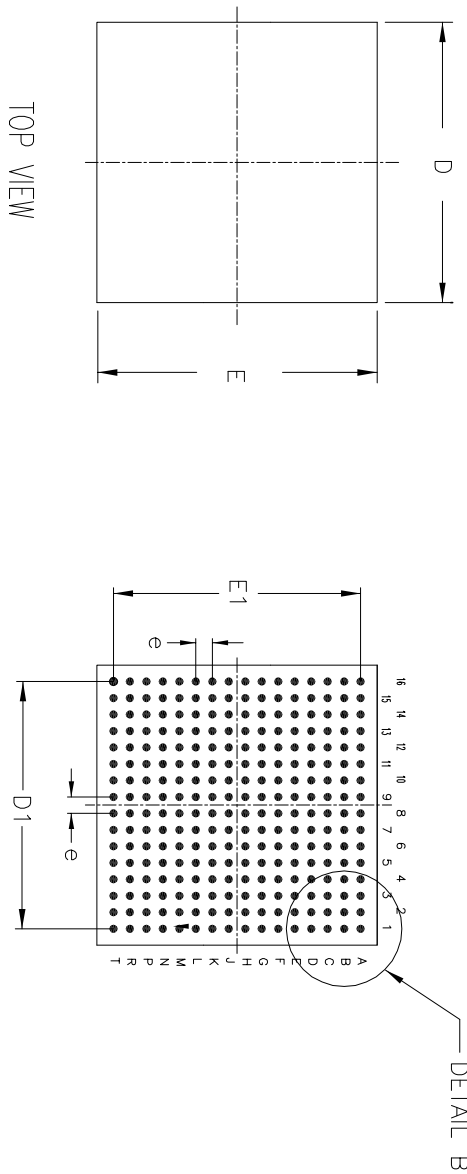


REVISION HISTORY

REV.	DISCRIPTION	DATE	APP'D
A	DRAWING ORIGINATION	08/17/09	PC



256-BALL 17X17mm L-fpBGA							
SYMBOLS	DIMENSIONS IN MM (Control Unit)			DIMENSIONS IN INCH (Reference Unit)			
	MIN	NOM	MAX	MIN	NOM	MAX	
A	1.48	1.63	1.78	0.058	0.064	0.070	
A1	0.33	0.38	0.43	0.013	0.015	0.017	
A2	0.65	0.70	0.75	0.026	0.028	0.030	
C	0.50	0.55	0.60	0.020	0.022	0.024	
D	16.80	17.00	17.20	0.661	0.669	0.677	
D1		15.00 BSC			0.591 BSC		
E	16.80	17.00	17.20	0.661	0.669	0.677	
E1		15.00 BSC			0.591 BSC		
f	0.90	1.00	1.10	0.035	0.039	0.043	
b	0.50	0.55	0.60	0.020	0.022	0.024	
e		1.00 BSC			0.039 BSC		
M		16			16		
N		256			256		

NOTES: "M" REPRESENTS THE SOLDER BALL MATRIX SIZE.



**EXAR CORPORATION**

Packaging Approval:		256-BALL 17X17mm L-fpBGA PACKAGE OUTLINE	
By: PC	Date: 08/17/09	Revision: A	Sheet: 1 OF 1

Drawing No: 256-BALL 17X17mm L-fpBGA