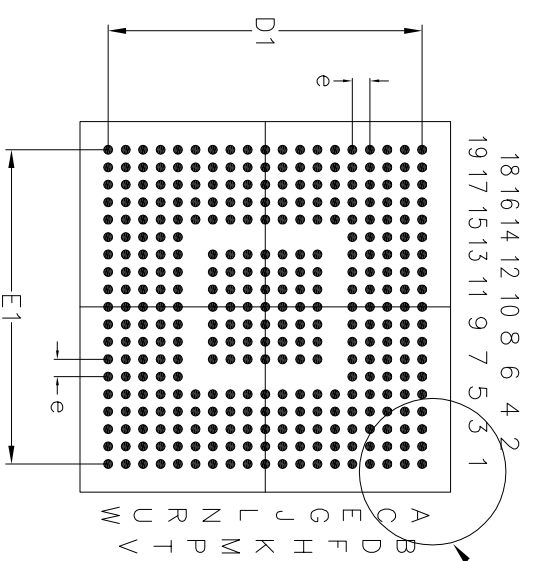
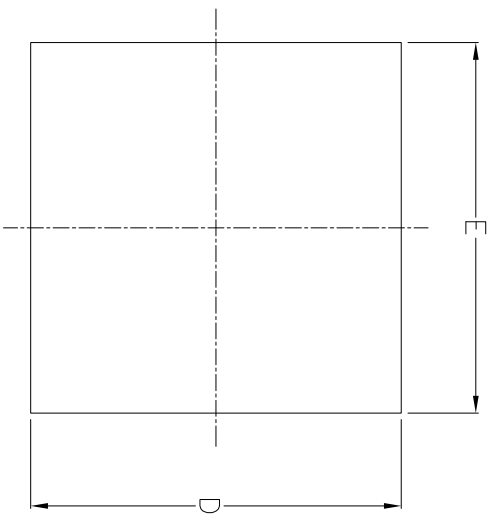


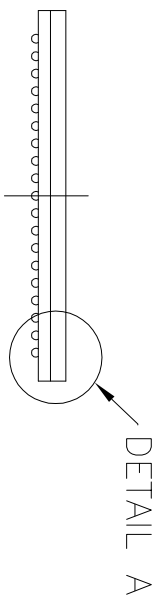
REVISION HISTORY

REV.	DISCRIPTION	DATE	APP'D
A	DRAWING ORIGINATION	06/20/11	PC

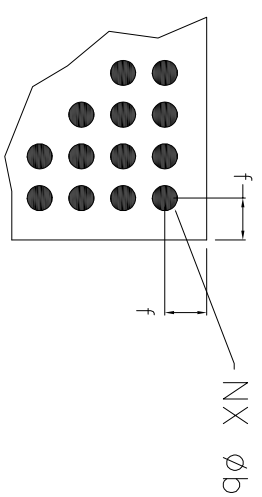


TOP VIEW

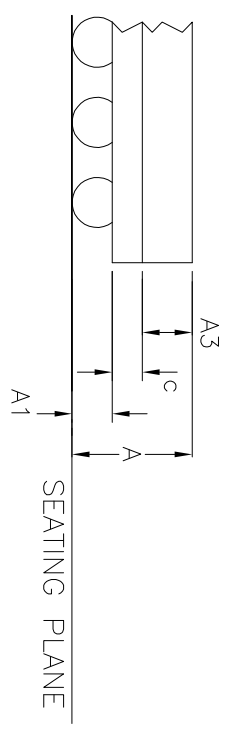
BOTTOM VIEW



SIDE VIEW




DETAIL B



DETAIL A

SYMBOLS	DIMENSIONS IN MM (Control Unit)			DIMENSIONS IN INCH (Reference Unit)		
	MIN	NOM	MAX	MIN	NOM	MAX
329-BALL 17X17mm L-fpBGA JEDEC MO-219						
A	1.43	1.57	1.71	0.056	0.062	0.067
A1	0.26	0.31	0.36	0.010	0.012	0.014
A3	0.65	0.70	0.75	0.026	0.028	0.030
c	0.52	0.56	0.60	0.020	0.022	0.024
D	16.85	17.00	17.15	0.663	0.670	0.675
D1		14.40	BSC		0.567	BSC
E	16.85	17.00	17.15	0.663	0.670	0.675
E1		14.40	BSC		0.567	BSC
f	—	1.30	—	—	0.051	—
b	0.36	0.41	0.46	0.014	0.016	0.018
e		0.80	BSC		0.031	BSC
M		19			19	
N		329			329	

NOTES: 'W' REPRESENTS THE BASIC BALL MATRIX SIZE.

		EXAR CORPORATION	
Packaging Approval:		Drawing No: 329-BALL 17X17mm L-fpBGA	
By: PC	Date: 06/20/11	Revision: A	Sheet: 1 OF 1