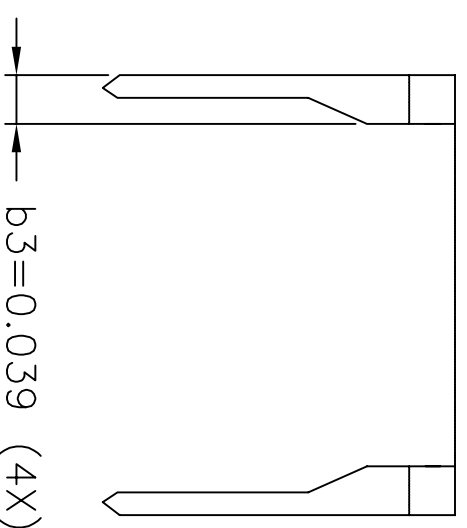
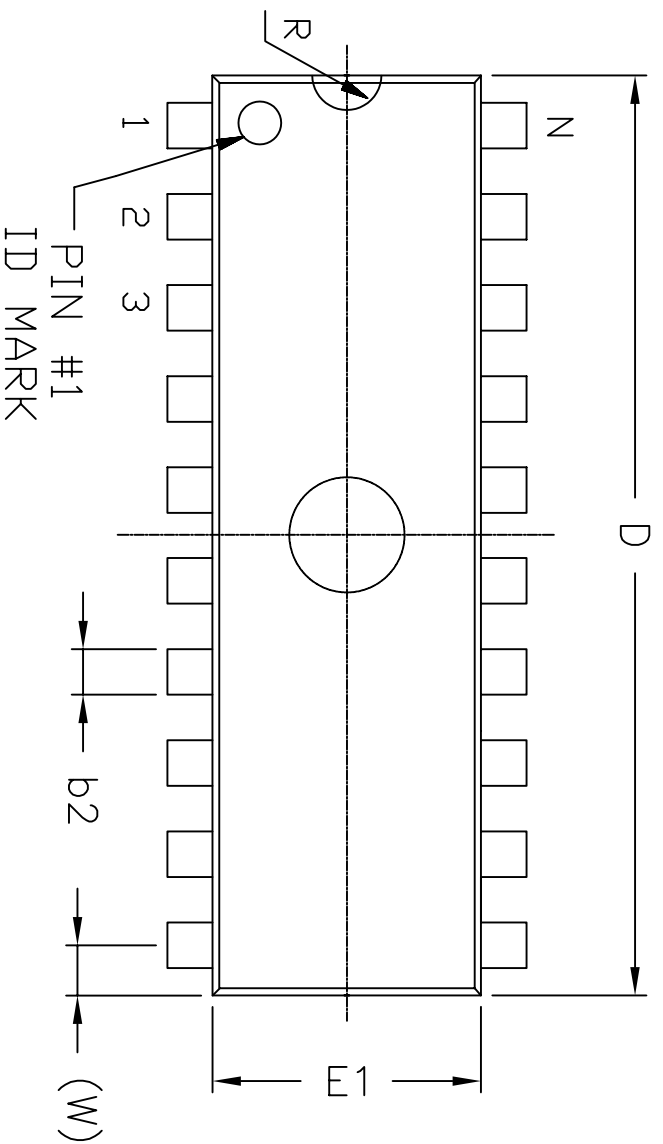
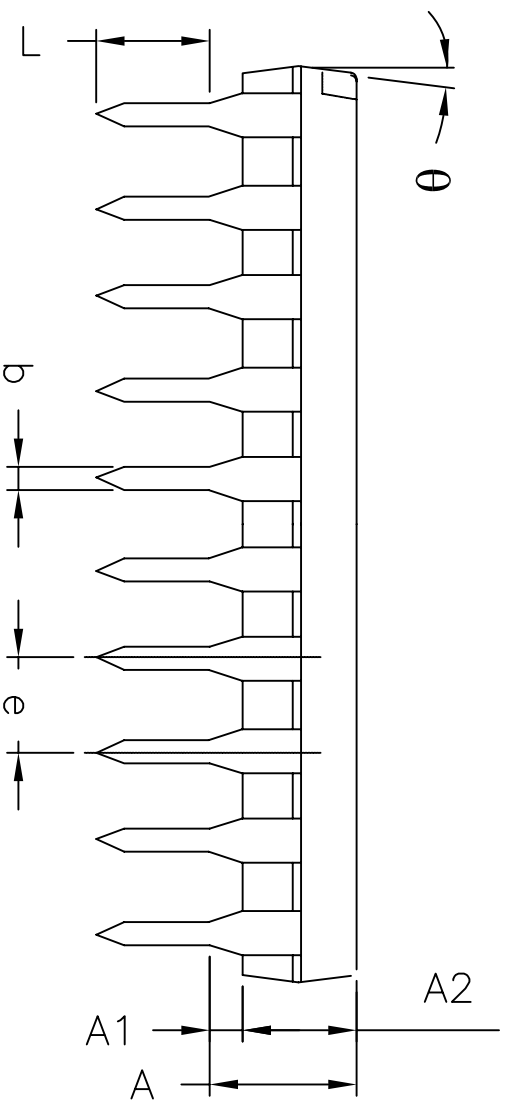


REVISION HISTORY				
REV.	DESCRIPTION	DATE	APP'D	
A	DRAWING ORIGINATOR	11/21/05	JL	
B	DRAWING FORMAT MODIFICATION	04/26/06	JL	
C	CHANGE DRAWING LOGO AND COMPANY NAME	11/21/07	JL	

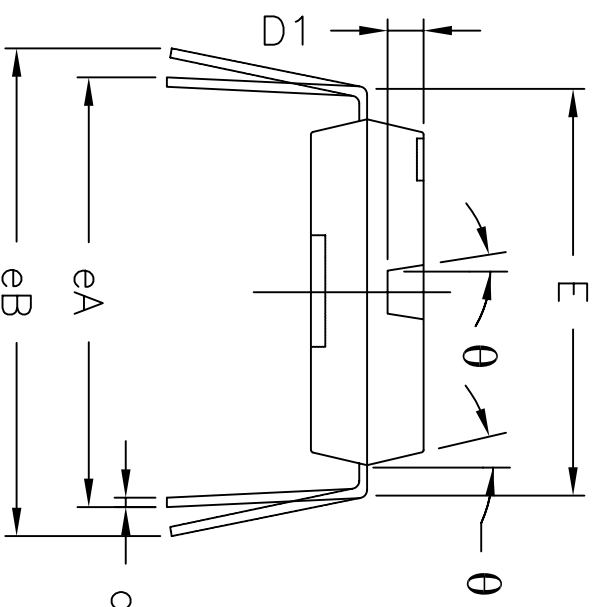
REMARKS:
FOR 8LD AND 16LD
ALL END LEADS (4X)
ARE HALF LEAD TYPES



Top View



Side View



Front View

16 Pin PDIP JEDEC MS-001 Variation BB										
SYMBOLS	DIMENSIONS IN INCH (Control Unit)				DIMENSIONS IN MM (Reference Unit)					
	MIN	NOM	MAX		MIN	NOM	MAX			
A	—	—	0.210	—	—	—	—	5.33		
A1	0.015	—	—	0.38	—	—	—			
A2	0.115	0.130	0.195	2.92	3.30	4.95				
b	0.014	0.018	0.022	0.36	0.46	0.56				
b2	0.045	0.060	0.070	1.14	1.52	1.78				
c	0.008	0.010	0.014	0.20	0.25	0.36				
D1	0.030	—	0.060	0.76	—	1.52				
E	0.300	0.310	0.325	7.62	7.87	8.26				
E1	0.240	0.250	0.280	6.10	6.35	7.11				
e	0.100 BSC			2.54 BSC						
eA	0.300 BSC			7.62 BSC						
eB	—	—	0.430	—	—	10.92				
L	0.115	0.130	0.150	2.92	3.30	3.81				
W	0.075 REF			1.91 REF						
R	0.030 BSC			0.76 BSC						
theta	4°	7°	10°	4°	7°	10°				
D	0.735	0.755	0.775	18.67	19.18	19.69				
N	16			16						

EXAR CORPORATION
Powering Connectivity

16 PIN PDIP PACKAGE OUTLINE

Packaging Approval:		Drawing No:		16-PIN PDIP	
By: JL	Date: 11/21/07	Revision: C	Sheet: 1	OF	1